

# Changing interventions

Philips Allura Xper family for interventional radiology

**PHILIPS**

# Your next interventional



# experience



The role of interventional radiology is continually expanding. Almost daily, new treatments and new applications are being pioneered. And although this expansion is exciting, it means that you are becoming more versatile than ever before - performing an increasingly wide variety of complex procedures.

As a world leader in X-ray imaging Philips has established a worldwide clinical network of partners. Together with our work with customers this has given Philips a deep understanding of your changing needs, resulting in truly meaningful innovation that helps move forward and expand the role of interventions.

That is why Philips introduces the next generation Allura Xper FD20 system. It is optimized for all the different procedures that you are now facing, ranging from vascular, non-vascular, embolization to interventional oncology procedures.

It combines superb image quality with advanced interventional tools, seamlessly integrated in the clinical workflow and making your Allura a true Xper system. It gives you enhanced opportunities with optional Live 3D guidance to even further expand your range of interventional procedures.

The integrated workflow, intuitive user interface, and personalized settings enable you to easily take full advantage of all the Allura's capabilities. And, for a broad variety of procedures, to assist you in providing excellent clinical care effectively and comfortably.

Let Philips help you to change the way you do interventions in your angio suite, with the potential to grow your practice.

# A new era in your angio

Imagine you could perform highly advanced clinical procedures in your own angio suite, with all the relevant information available where and when you need it. Now you can, because the Allura Xper FD20 combines superb image quality and advanced interventional tools with an integrated workflow solution. With the Allura you can diagnose and treat more patients in your suite than ever before. That's because it's designed to support all of today's interventional procedures, and it can make a positive impact at every stage: from preparation and planning to archiving and reporting.

## Enhanced diagnosis

You can evaluate small details and vessels with extreme clarity combined with Philips' unique 2k x 2k imaging chain. Diagnosis is further enhanced with high quality 'real-time' reconstructions, allowing you to review vasculature in 3D with a single contrast injection. In addition, the high-resolution 3D vessel information can be fused with CT and MR datasets enhancing clinical insight. And with the remarkable XperCT technology, developed by Philips, you can evaluate soft tissue and boney structures right in the angio suite.



Dynamic 3D Roadmap

## Simplified preparation

Planning your procedure is made faster and more convenient than ever thanks to the system's ability to show you all previous images - including MR, CT and US datasets. System set-up is also easier and faster, as it sets itself automatically to your own personalized settings. The geometry-reset function automatically realigns the system to the default position within seconds. Furthermore, the high-quality LCD monitors are suspended from the ceiling and are easily placed at your preferred position for optimal viewing.

# suite

## Advanced treatment

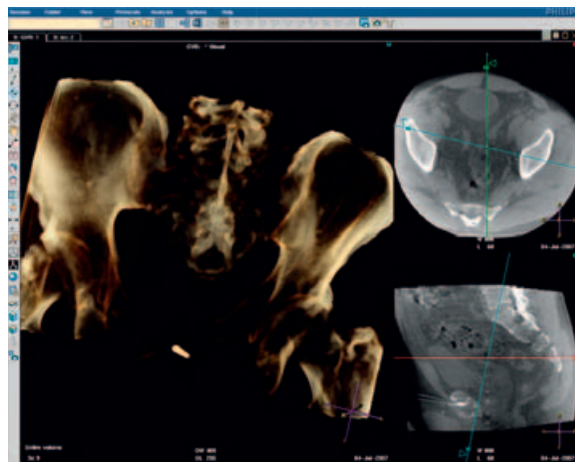
During treatment you have high-quality fluoroscopy and advanced roadmapping capabilities. Navigation can be further enhanced with the Dynamic 3D Roadmap, which can result in reduced contrast medium and X-ray dose. ViewForum provides immediate access to multi-modality information at tableside for reference during the intervention. Another important efficiency feature is the Xper table's automatic positioning – bringing the table back to the reference position with a single command.

With XperGuide, you can perform advanced non-vascular Live 3D guided needle procedures in your angio suite. XperCT data will help you get to the exact spot quickly and efficiently.

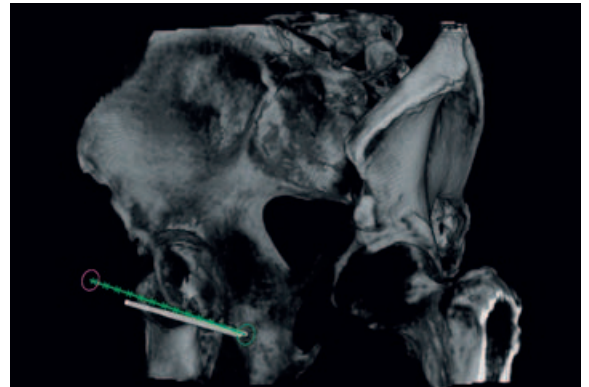
Throughout your diagnosis and treatment, your patient is cared for by DoseWise: the Philips philosophy for minimizing X-ray dose while ensuring excellent image quality.

## Integrated ultrasound solution

To provide additional support for your interventional procedures, like biopsies, vascular access cases and drainages, you can extend the power of your Allura Xper



ViewForum



XperGuide

system with Philips' unique CX50 ultrasound integration solution. The new CX50 is a compact ultrasound system with the image quality you would normally expect from a large ultrasound machine. It enables you to have premium image quality ultrasound available right at the table. The ultrasound images are displayed on the Allura exam room display, providing premium ultrasound image quality to increase your confidence, decrease procedure time, and it provides diagnostic information right where you need it, when you need it.

## Speeding up archiving and reporting

With ViewForum, post-processing can be performed while a patient is being examined and treated, thus improving lab efficiency. You can also send the medical report with images via email to referring physicians straight from your Allura Xper system. In short, the Allura Xper FD20 helps you to change the way you do interventions in your angio suite, with the potential to grow your practice. What's more, thanks to the advanced automation and systems integration, everything is easy to use and deployed in seconds. Just what you would expect from a company dedicated to sense and simplicity.

# Do more, more easily

To meet the challenge of the increasing variety of delicate procedures, you need an X-ray system that is both advanced and easy-to use. One that is flexible and can be controlled intuitively. Only then can you fully focus on your patient – not the system. That is why we have done everything possible to ensure that the advanced technology within the Allura Xper FD20 is easily accessible. Thus creating an environment that is comfortable for patients and staff.

## Easy positioning and optimal 3D performance

The Allura Xper systems are designed for fast, flexible imaging. The rock-solid C-arm provides excellent patient access and also enables you to perform rotational scans within seconds. And you can take full advantage of the Allura's speed with total confidence, thanks to the BodyGuard detection system, which senses the patient's body.

## Intuitive controls at tableside simplify operations

The Allura Xper system enables you to focus on the patient with a user interface that is intuitive and ergonomic, making system operation transparent. The Xper Module gives you full command of the system at tableside: from selecting the protocols you need to using the advanced interventional tools, and streamlining procedures.

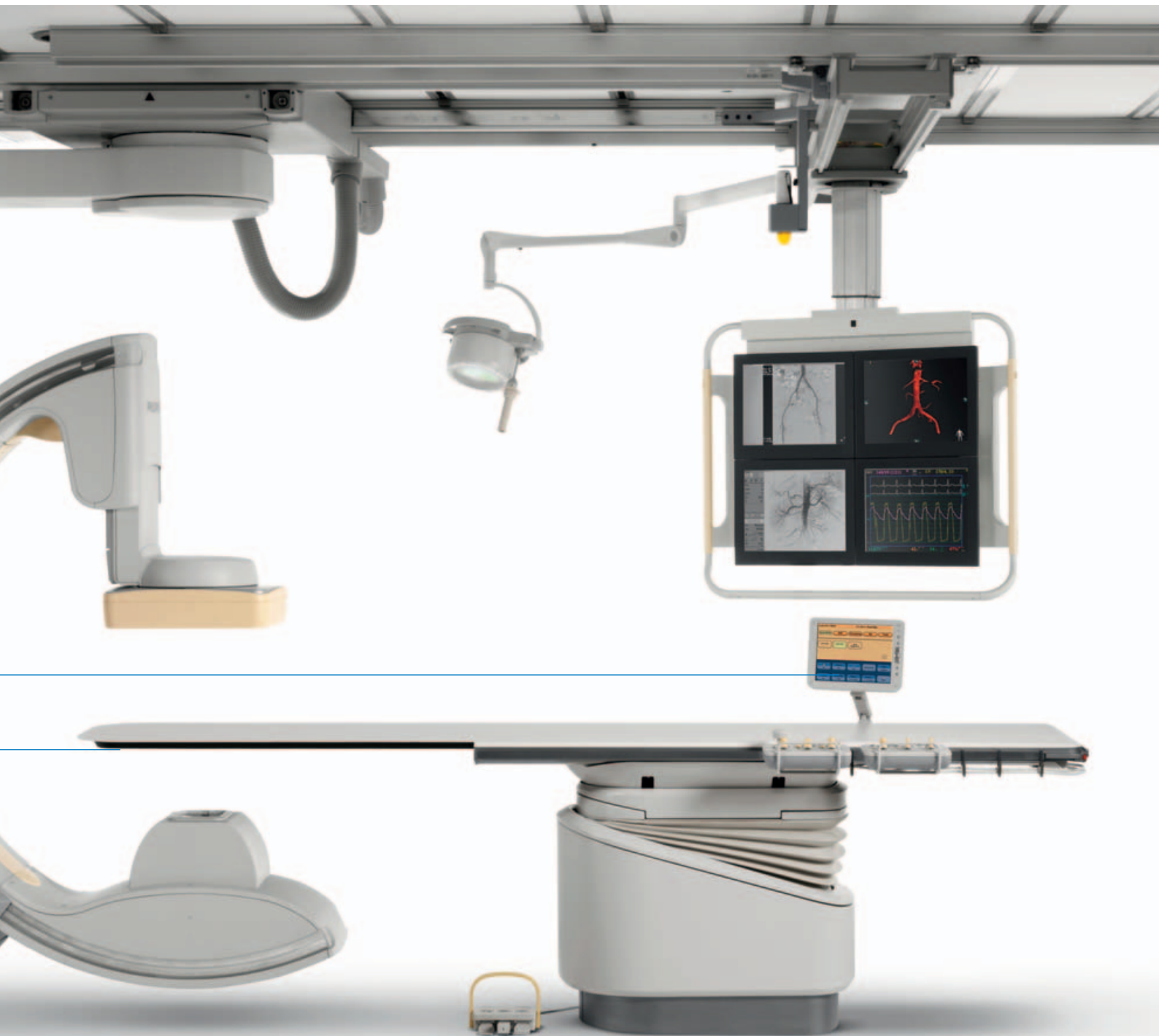
## Easy patient access

The Xper table, with its feather-light, free-floating capabilities, 250 kg patient weight capacity, and tabletop memory position make patient positioning easier than ever. Together with its true iso-centric tilt and cradle capabilities it gives you all the flexibility you need for a broad range of procedures.

## Personalization streamlines interventions

With Xper Settings, your personal preferences and protocols are pre-programmed, saving you time and effort during procedures. Everything from patient data management, exam scheduling, image acquisition, system movement, image post-processing and archiving – can be set according to your own way of working and for each of the clinicians in your department.





# Visualization at its cutting

As interventions increase in complexity and medical technology advances rapidly, image quality becomes even more critical. In the course of a day's work, high-quality imaging saves time and enhances patient care.

## **2k x 2k imaging for better clinical insights**

The Allura Xper FD20, with its rotatable 30 x 40 cm flat detector has set a new standard in image quality. Its groundbreaking 2k x 2k digital imaging chain takes full advantage of the flat detector technology, to help visualize small details. Its resolution is four times greater than that of conventional systems, to enhance clinical insight. Especially helpful in evaluating small vessels and structures and visualizing stents, coils and embolization materials.

## **Powerful imaging tools to support clinical performance**

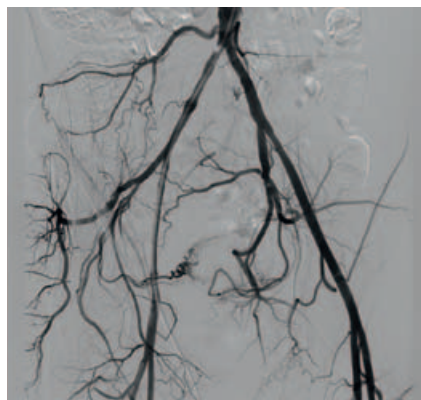
Designed to meet your most demanding imaging requirements and to help you achieve excellent clinical care, the Allura Xper FD20 provides a powerful set of diagnostic and interventional tools. These include Subtracted Bolus Chase, Rotational Angio, Interventional 3D, RoadmapPro, SmartMask, and Dual Fluoro functionality.

Fluoroscopy and Subtracted Fluoroscopy image quality is greatly enhanced by the Philips unique Xres image processing algorithm. Xres optimizes image quality in real-time by simultaneously reducing noise levels and enhancing contrast areas. This enables you to perform complex and delicate procedures with greater confidence.

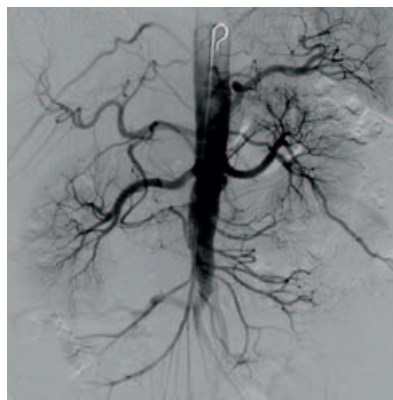
## **Perfect image. Perfect sense.**

Perfect image quality is essential in today's angio suite. But so too is minimizing X-ray and contrast doses. Fortunately, Philips has applied its unique 'DoseWise' philosophy of X-ray dose management to help provide low X-ray dose levels while producing excellent image quality.

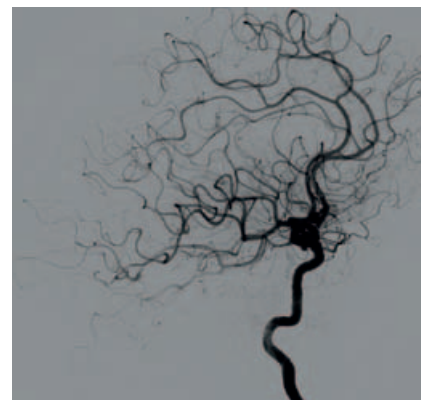
The Allura Xper system has SpectraBeam technology in place to generate images using low X-ray dose. It filters out soft radiation and is the most important factor in overall X-ray dose reduction. Uninterrupted virtually noiseless operation is possible, even during your most demanding procedures, thanks to the powerful MRC X-ray tube, which is the backbone for SpectraBeam filtration.



Iliac Arteries



Abdominal Aorta



Internal Carotid

edge



**Complete viewing flexibility with new FlexVision XL display**

In today's interventional setting, you are performing more complex procedures with smaller devices in complex anatomy - a difficult combination. Often you are sorting through diagnostic information from multiple sources to help guide your intervention. To help you

with these challenging viewing requirements, Philips has introduced a new 56" display: FlexVision XL.

FlexVision XL provides outstanding viewing flexibility, using a large, high-definition LCD screen. It allows you to display multiple images in a variety of layouts - each tailored for your specific procedure. With FlexVision XL, you have the image size you want, where you want it.

# An extra dimension to

Give your angio offering an extra dimension with our advanced 3D imaging options. They can assist in your decision making and can increase the range of procedures available in the suite, cutting waiting time and inconvenience for your patients.

## **Interventional 3D imaging**

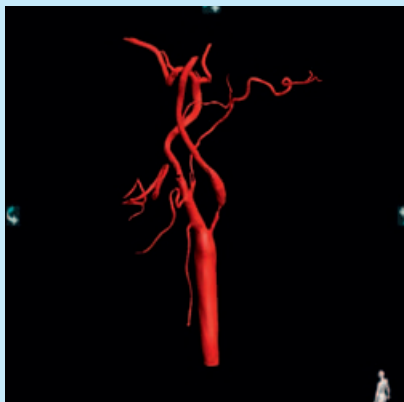
Philips Allura 3D-RA provides extensive 3D visualization of vascular pathologies from a single rotational angiography run. Used with the unique whole-body coverage of Philips Allura FD systems, it can cover any anatomy including cerebral, abdominal and peripheral vasculature. Moreover, its high-resolution 3D reconstructions are available in near real-time, while a full suite of analysis and visualization supports interventional decisions

- 3D imaging in the interventional lab
- Volumetric view of any vascular anatomy for 3D guidance during treatment
- Assists with treatment planning

## **Live 3D image guidance**

Philips Dynamic 3D Roadmap provides live 3D image guidance for navigating through vascular structures anywhere in the body. It offers real-time registration of live 2D fluoroscopy with a 3D angiography volume. The 3D vessel tree can be acquired with the 3D-RA feature on the X-ray system or from a previous CT/MR scan. The resulting roadmap shows the progress of a guide wire, catheter or coil in real time for neuro or body applications, with automatic compensation for changes in table and gantry position, field of view and source-image distance.

- Full 3D view for live guide-wire or catheter navigation through complex structures
- Lower X-ray dose and contrast medium usage than with conventional roadmaps
- Dynamic guidance with real-time compensation for changes in table and gantry position, field of view and source-image distance



Allura 3D-RA



Dynamic 3D Roadmap

# your angio suite

## CT-like imaging during interventions

Add CT-like imaging to your interventional system. XperCT lets you assess soft tissue, bone structure and stent deployment before, during and after interventional procedures. Using a range of acquisition protocols, it supports neuro and body applications – delivering high-quality 3D reconstructions in less than a minute. During examinations, it helps you avoid structures and identify vessels feeding tumors.

And it can help to reduce delays and enhance patient comfort during post-procedure check-ups.

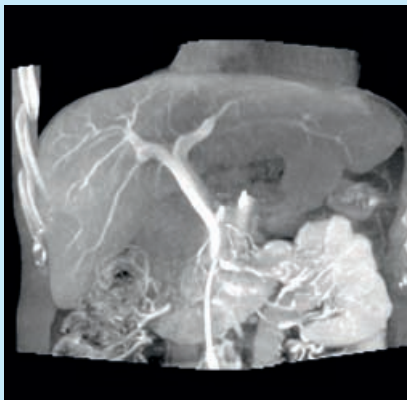
- Supports diagnosis, planning, interventions and follow up
- Combine with Allura 3D-RA to visualize soft tissue and vascular anatomy on one image
- Use with XperGuide option for live needle guidance anywhere in the body

## Live 3D needle guidance

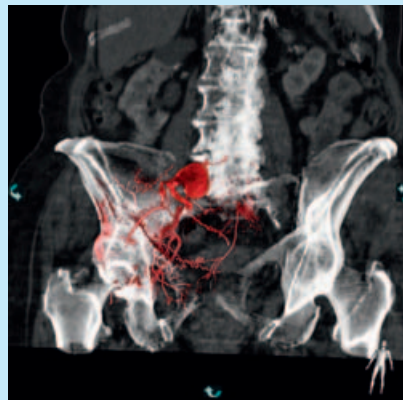
Philips XperGuide overlays live fluoroscopy and 3D imaging data (from CT, MR or Philips XperCT) to deliver real-time 3D needle guidance. It offers full tableside control plus entry-point and progress views for an easier workflow. This advanced navigation tool lets you keep a wide range of needle procedures such as biopsies, drainages and RF ablations in the angio setting.

So there's less waiting and inconvenience for your patients, and less disruption for your diagnostic CT suite.

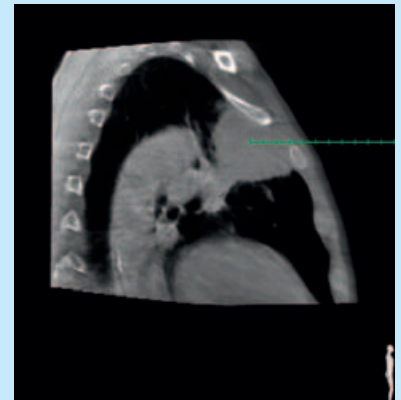
- Supports a wide range of procedures from biopsies and drainages to RF ablations
- Real-time feedback on needle location during diagnosis, planning and intervention
- Ideal patient access throughout the procedure



XperCT



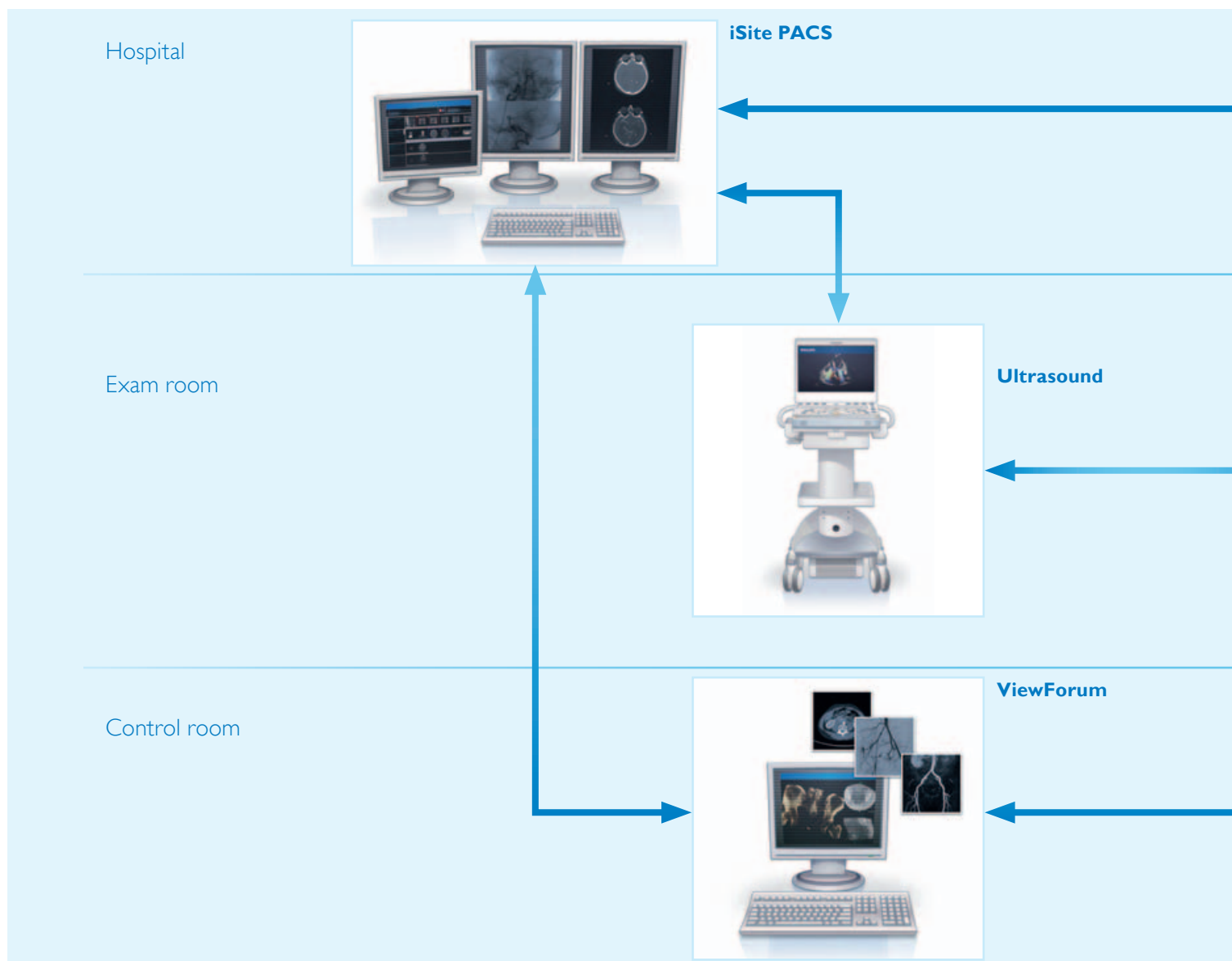
3D-RA on XperCT



XperGuide

# Integration for efficient

The increasing complexity of procedures is compounded by the pressures on you and your team to perform more procedures. So, more than ever, you need easy and fast access to all relevant information and clinical data, preferably integrated with departmental IT systems. That is why Philips provides an integrated environment that brings together all the information you need, where you need it. So you can manage and improve your procedures and departmental efficiency with ease.



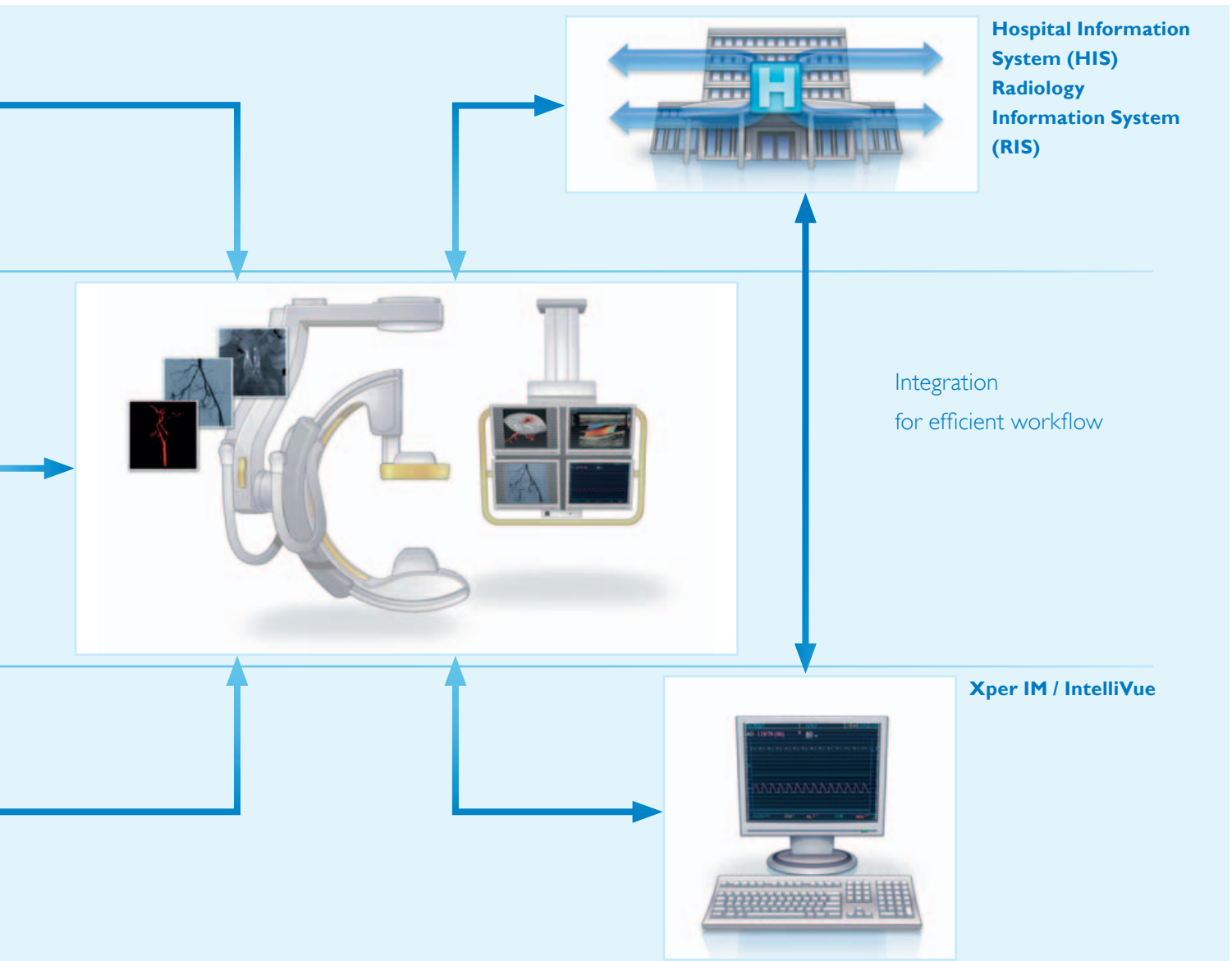
# workflow

## Streamlined patient and procedure management

- Access to previously acquired diagnostic data from CT, MR and US
- Operational integration with HIS/RIS and iSite PACS to save space in the control room
- Parallel working allows for post-processing of a patient in the control room, while treating another patient in the exam room
- Medical reports sent with clinical images to referring physicians
- Automatic archiving of clinical images to flexible destinations.

## Integrated interventional environment

- Access and control of multi-modality information in the exam room.
- Integration with Philips IntelliVue for patient monitoring
- Integrated hemodynamic monitoring and electronic clinical reporting as well as billing and inventory management by Xper Information Management
- Integration with in-room Ultrasound equipment
- Integration with 3rd party IVUS equipment.



# Prepared for the future

Philips provides a full lifecycle solution designed around your patients, your people, and your organization. We help you succeed in every phase of system ownership, from planning to start-up, through peak usage and renewal.

With more than 5,000 Allura systems in use worldwide, Philips has become the trusted choice of radiologists around the globe. Why? In one word: reliability.

How do you measure reliability? If you can start procedures when you arrive in the morning and end the day without equipment-related interruptions, that's reliability. Allura has been tested in the busiest institutions in the world, passing with flying colors.

The Allura Xper biplane series are especially reliable in the long term. Our wide choice of options enables us to configure a solution that perfectly addresses all your needs, your application mix, and your budgetary requirements. It's also designed to grow with you, with timely upgrades so that it remains optimally productive in the years to come.

## **Philips Remote Services**

Philips Remote Services provide the advanced diagnostics that help minimize downtime even more. Your equipment remains more reliable through Remote Proactive Support, remote diagnoses and fast repair. And with Remote Desktop assistance, you allow us to see what is on your screen. You can even allow our experts to perform certain tasks for you from a distance, making our remote help as efficient as possible. Best of all, our Remote Services solution is offered free of charge to customers with a Philips Platinum, Gold or Silver service agreement and during warranty.

## **Keep your technology fresh**

Choose Philips Technology Updates, so you can keep your system fresh with an update of the purchased interventional tools like Allura 3D-RA or XperGuide. You and your staff get free clinical education with each update, ensuring you stay as advanced as your system.





## More patient comfort, less stress

At Philips we obviously focus on the system itself, but then we look further. Even with the most advanced technology, the human factor remains critical. We consider the total interventional experience and we have created the unique 'ambient experience concept'.

Ambient experience maximizes comfort and minimizes stress for both patients and staff by using a combination of lighting, music and architectural elements to create a uniquely soothing and comfortable environment – in the waiting room, in the procedure room, and in the control room. This revolutionary concept is based on a deep understanding of patient and medical staff needs: insights that help you create a more relaxing experience for your patients, a better working environment for your staff, and a unique competitive differentiator for your healthcare facility.

**Philips Healthcare is part of  
Royal Philips Electronics**

**How to reach us**

[www.philips.com/healthcare](http://www.philips.com/healthcare)

[healthcare@philips.com](mailto:healthcare@philips.com)

fax: +31 40 27 64 887

**Asia**

+852 2821 5888

**Europe, Middle East, Africa**

+49 7031 463 2254

**Latin America**

+55 11 2125 0744

**North America**

+1 425 487 7000

800 285 5585 (toll free, US only)



© 2010 Koninklijke Philips Electronics N.V.  
All rights are reserved.

Philips Healthcare reserves the right to make changes in specifications and/or to discontinue any product at any time without notice or obligation and will not be liable for any consequences resulting from the use of this publication.

Printed in The Netherlands.  
4522 962 52451 \* JAN 2010